



User Manual for FrontBox 2.1

1、Install FrontBox2.1

1.1 Download and Install

Click [FrontBox] at the bottom of the home page to log on <http://www.chinesemenu.com>. (Figure 1)



Figure 1

Click [FrontBox Download (Exe)] or [FrontBox Download(zip)] to download FrontBox. (We suggest you choose exe format to download.) Then click [Save] on the popup window. (Figure 2)

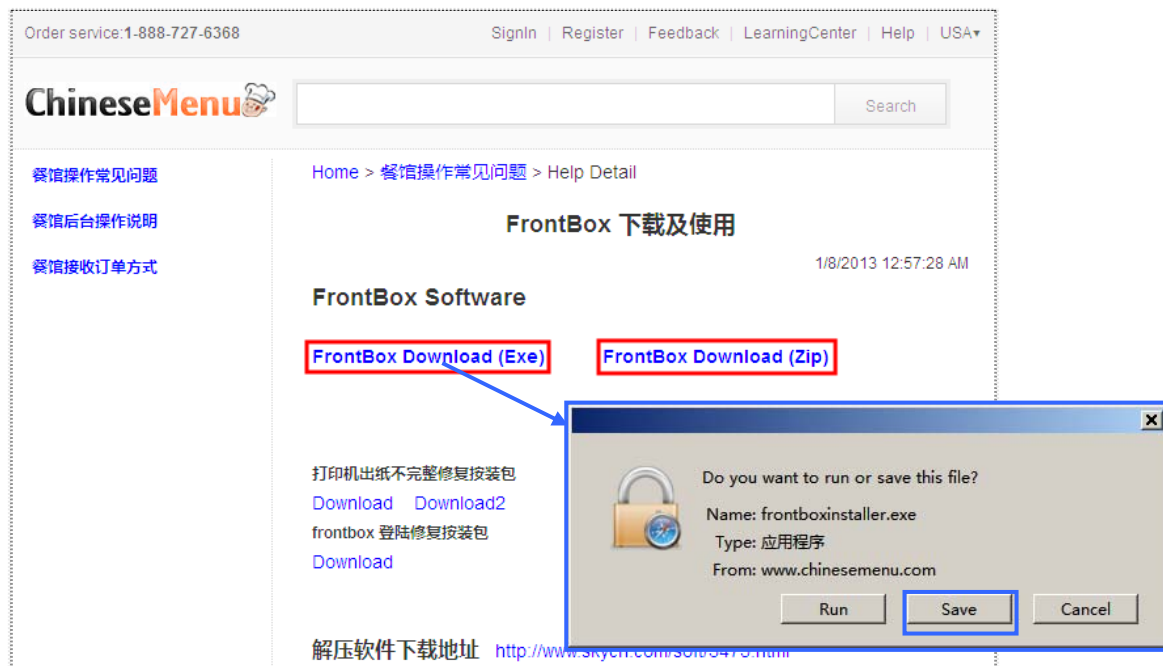


Figure 2

Double Click the icon with .exe format to install the program. Click [Yes] to complete the installation. (Figure 3)

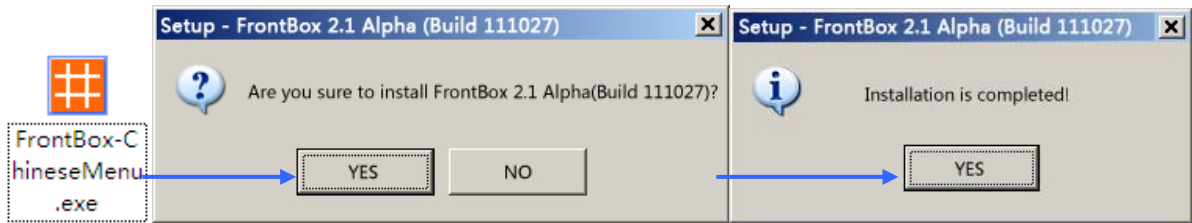


Figure 3

When you finish the installation, the FrontBox2.1 program will run automatically.

1.2 Upgrade

If you have already had the FrontBox2.0, you can upgrade it to FrontBox2.1.

To upgrade the program, double click the existing icon of FrontBox and the auto update window will pop up as is shown in Figure 4.

Click [ManualUpdate], then the system will be upgraded automatically. (Figure 4)

Click [YES] to finish updating. Then you can click the new icon of FronBox to start operating.

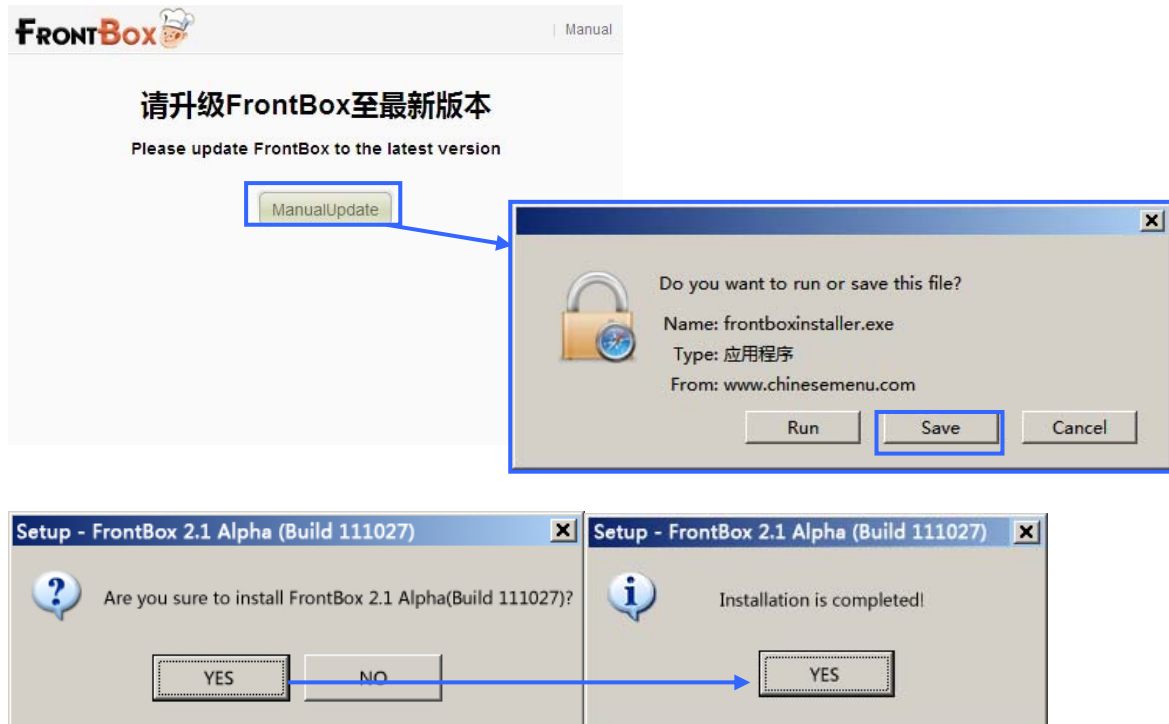


Figure 4

Frequently Asked Question

If you are using Kaspersky as the anti-virus software of your computer, it may cause misdeclaration for your orders. Please add FrontBox into trust list (white list) and reinstall the program.

2、 Instruction of FrontBox2.1

2.1 Log in FrontBox

You will be asked to log in at the first time you start using FrontBox. (Figure 5) To log in FrontBox, please enter your phone number and password correspondingly. If you forgot your password, you can click [forgot password?] or contact with our customer consuler to retrieve your password.

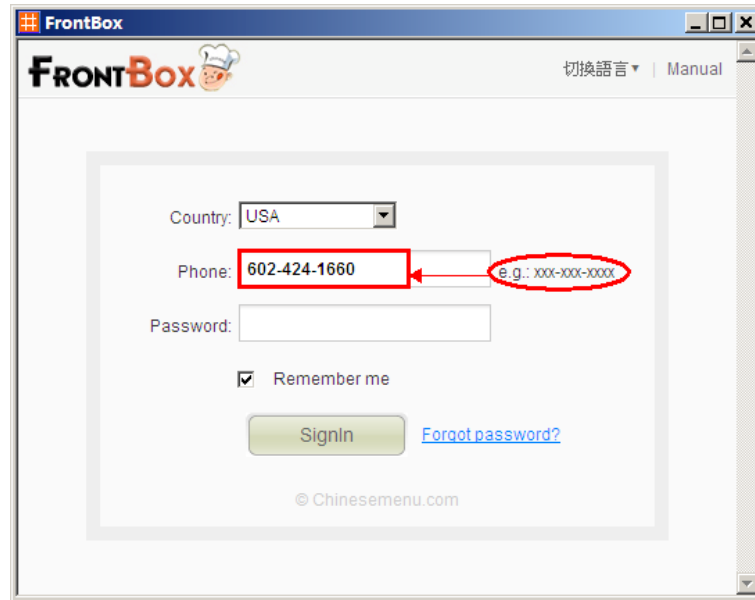


Figure 5

2.2 Functions of FrontBox2.1

1) System Menu

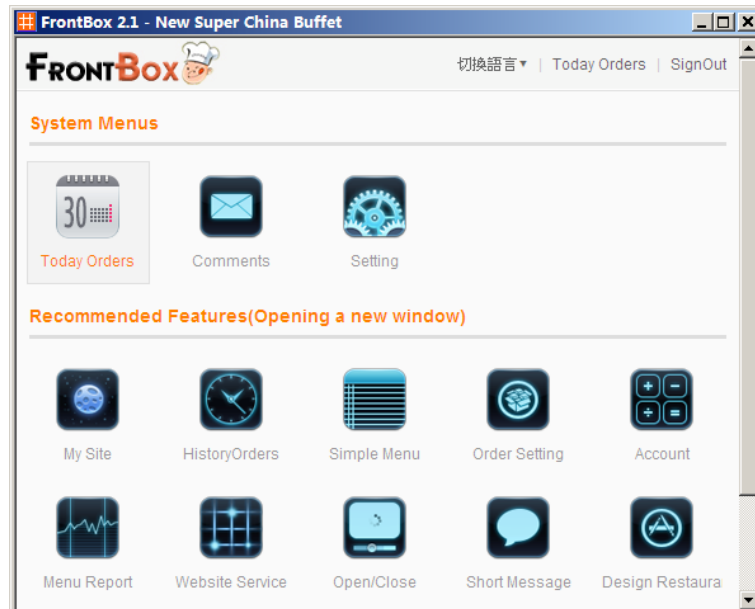


Figure 6

System menu shows the functions of FrontBox and some recommend functions which Chinesemenu offers to you. You can go back to System Menu Page by clicking the FrontBox Logo on the top of any FrontBox page. (Figure 6)

2) Order Today

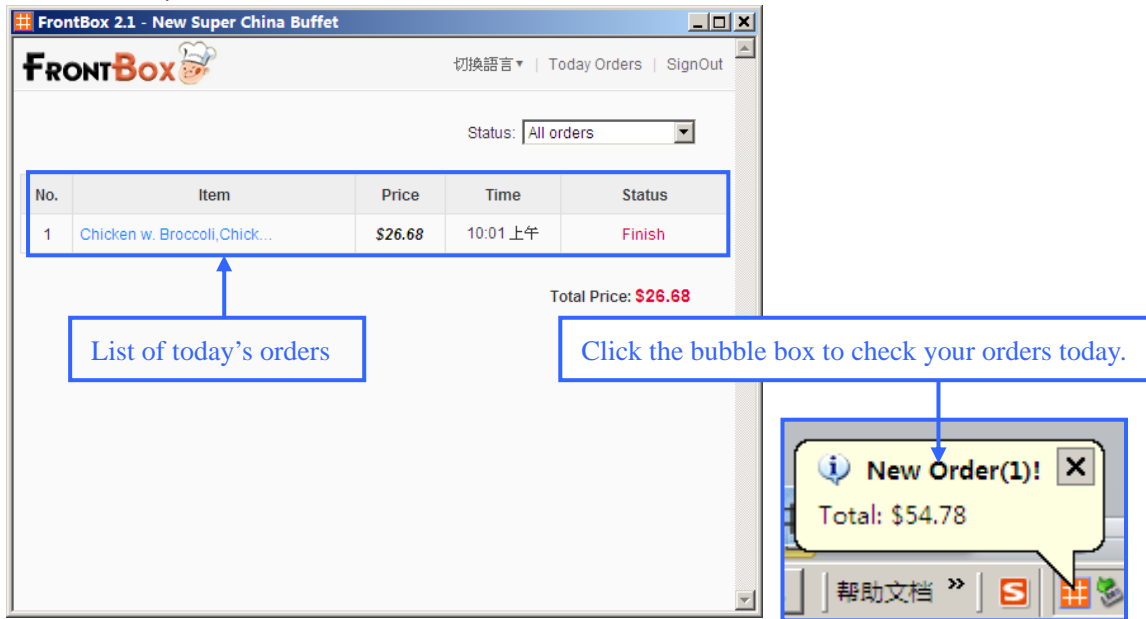


Figure 7

In the started state of FrontBox, new orders will pop up and show at the bottom right corner with bleeps (The sound can be reset in the setting program). (Figure 7) New orders will keep reminding here.

3) Order Review

Click [Today Orders] to view detailed information of your orders. (Figure 8)

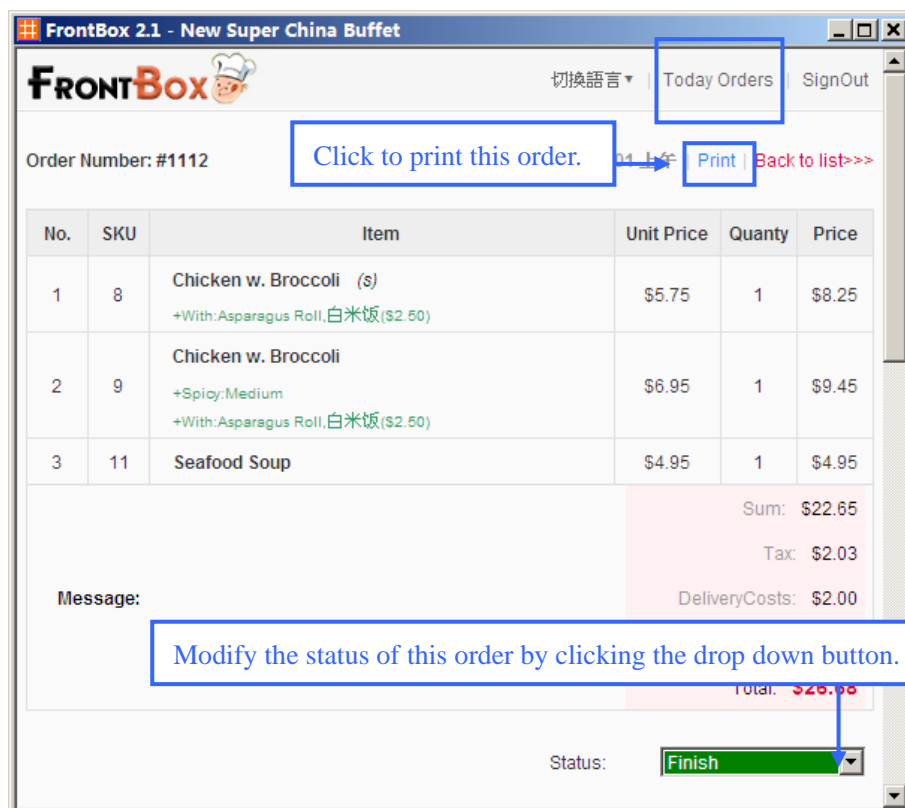


Figure 8

New Functions:

We added map function in FrontBox2.1. When you get a deliver order, we will calculate the most optimized route for your reference. (Figure 9)



Figure 9

4) System Settings

Click the setting icon in the main menu page to enter the setting page. (Figure 10)

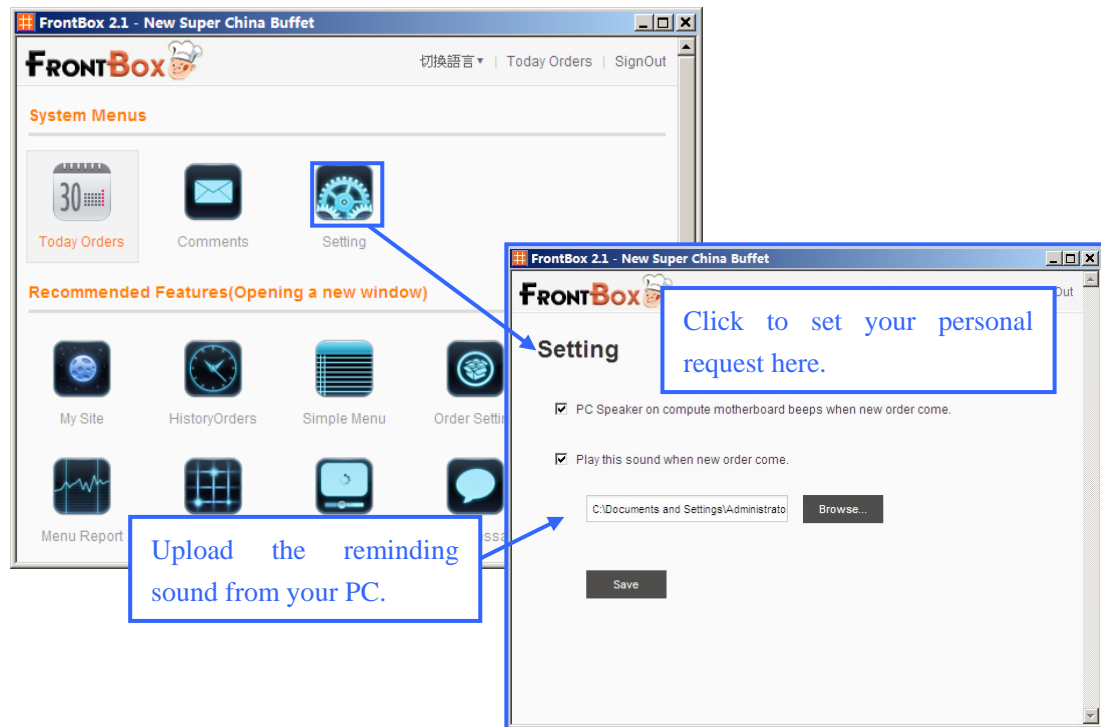


Figure 10

5) Other Functions

In the main menu page, we recommend many featured functions of ChineseMenu to you. You can enter the backstage of your restaurant and enjoy these functions by clicking the corresponding icons.